



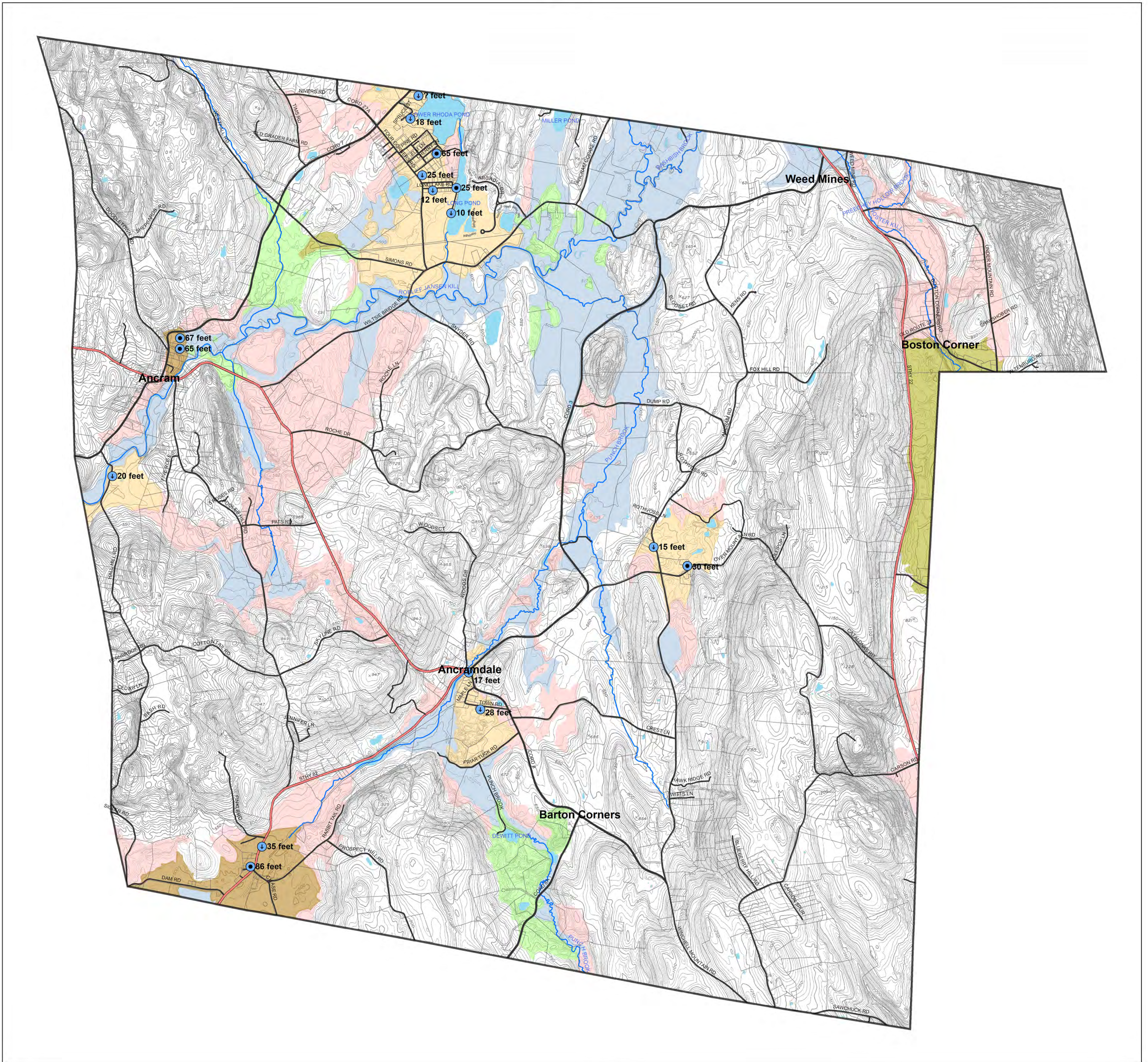
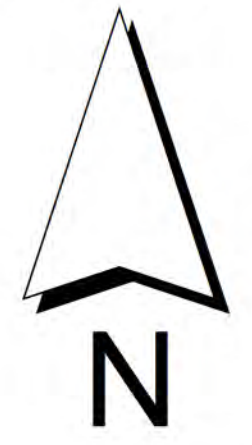
New York Rural Water Association
 Address: P.O. Box 487, Claverack, NY 12513
 Phone: 518-828-3155
 Web Site: <http://www.nyrruralwater.org>

Unconsolidated Aquifers

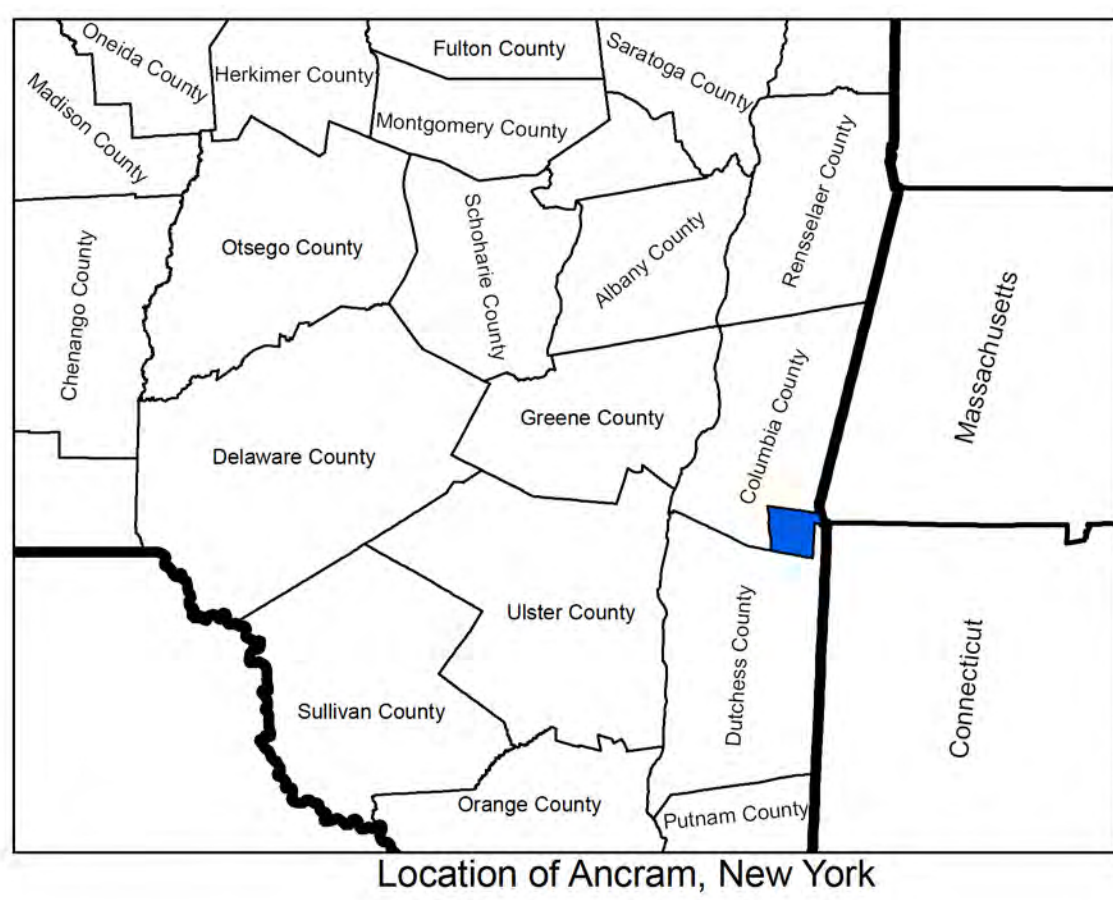
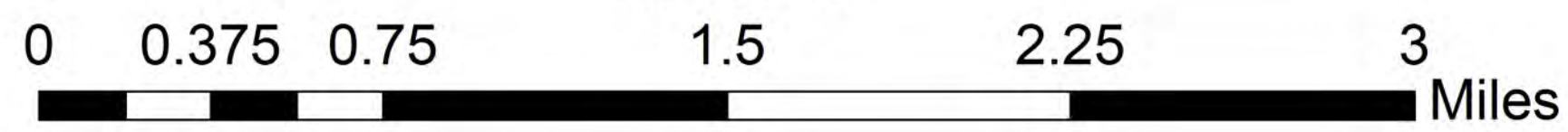
Ancram Groundwater Protection Plan
 Plate No. 3

Town of Ancram, New York

Steven Winkley
 2008



Scale



Location of Ancram, New York

Legend

- Driven Well (point) with total depth
- Drilled Well (in sand and gravel) with total depth
- Currently Utilized Sand and Gravel Aquifers**
 - Shallow sand and gravel utilized by wells (<= 30 ft.)
 - Deeper sand and gravel utilized by wells (> 30 ft.)
- Potential Sand and Gravel Aquifers**
 - Shallow sand and gravel not currently utilized by wells
 - Deeper sand and gravel not currently utilized by wells
- Other Areas of Stratified Deposits**
 - Shallow fine sand and silt (not typically utilized by wells)
 - Sand and gravel of limited saturated thickness
- Local Road
- County Road
- State Highway
- Water Body
- Stream

Note:

The New York Rural Water Association makes no guarantee, expressed or implied, regarding the correctness of the interpretations presented on this map and accept no liability for the consequences of decisions made by others on the basis of the information presented here. The geologic interpretations are based on data that may vary with respect to accuracy of geographic location, the type and quantity of data available at each location, and the scientific and technical qualifications of the data sources. This map is not meant to be enlarged.

About This Map:

This map shows the type and distribution of unconsolidated aquifers in the Town of Ancram, New York. These aquifers are water-bearing deposits of sand and gravel that have been delineated by Steven Winkley of New York Rural Water Association on the basis of surficial geologic boundaries (see Plate 2) and available subsurface data (see Plate 1).